

2022 RANGE

# AUSSIE BORN & BRED



HISTORY

# ONLY AUSTRALIAN CRAFTSMANSHIP CAN MAKE A MONGREL

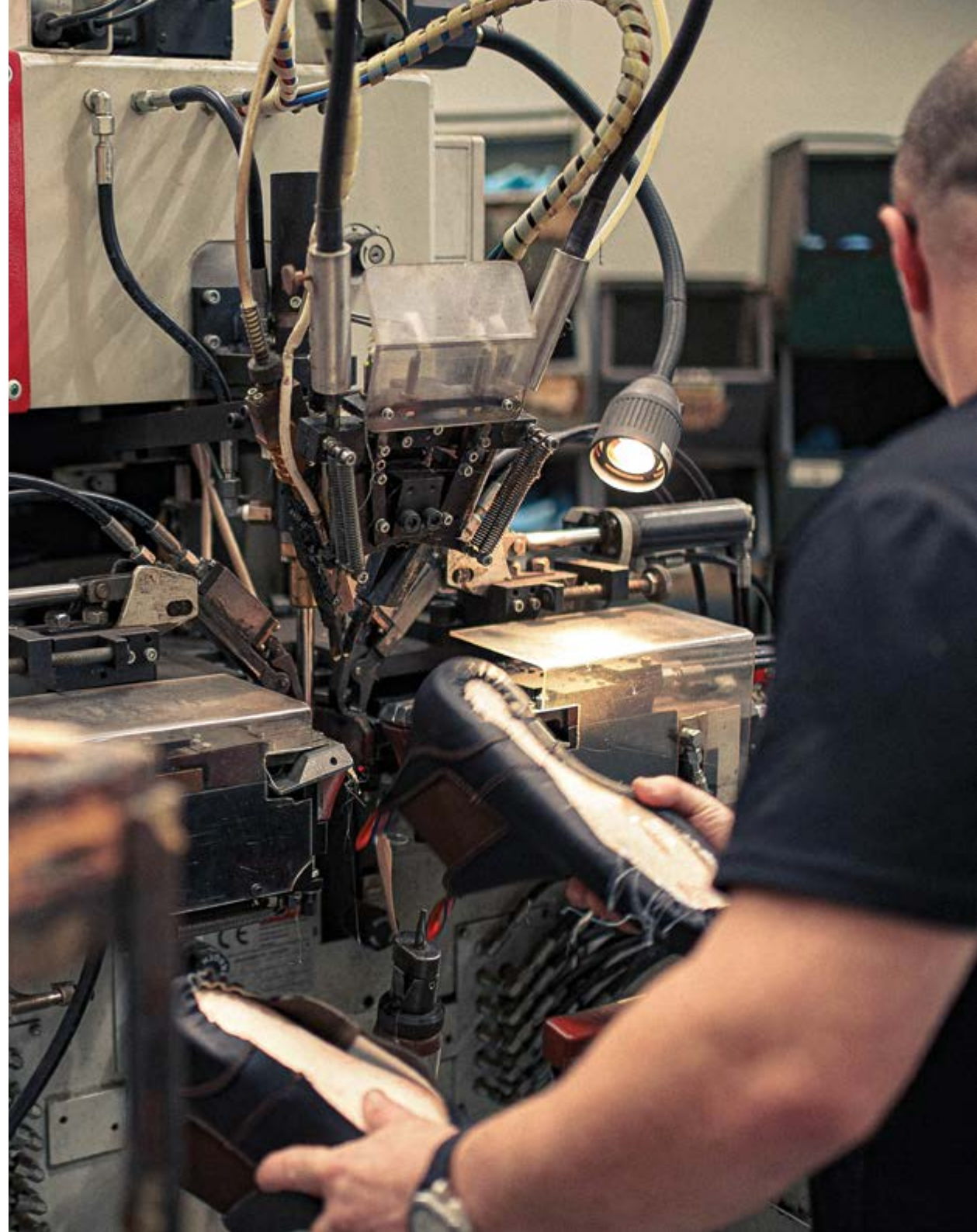




Mongrel Boots is a fifth-generation family owned company that has been manufacturing footwear in Australia since 1930. Boot making is in our blood, and this very trade has been passed down from generation-to-generation within our family since the beginning. With an old school attitude for workmanship, our goal is still to deliver the most perfectly engineered boot for the job.

Our team designs boots with the help of modern technologies, to ensure the highest levels of safety and comfort.

More than just a brand name, Mongrel represents authentic Australian boots that really are Aussie Born and Bred.



# HISTORY

## IF THESE BOOTS COULD TALK

1930

Stanley Cloros was a bootmaker by trade. He sets up his first business on Australian soil, as a shoe repairer in Surry Hills, Sydney. His son, William Basil Cloros, works alongside him as they ply their trade together repairing shoes and making handmade footwear to sell at the Surry Hills markets on weekends.



1960

*Victor*  
SHOEMAKERS SINCE 1930

The company is renamed to 'Victor Footwear Pty Ltd'. Victor focuses on manufacturing work and casual footwear for men, women & children. William's son, William Stanley Cloros, stands alongside his father in a new factory in St Leonards, Sydney. They become a large manufacturer of the elastic sided and desert boot styles of footwear. Both men have a love of machinery and continue to invest in the most up-to-date footwear manufacturing equipment.

2000



Victor launches a new style of boot known as the 'Mongrel'. At the time, it's seen on just one style of boot, and only promoted on the label on the box. The idea came from the desire by Victor to associate its boot making skills with its Australian heritage. Almost an overnight success, the Mongrel name soon developed into a complete range, and the brand effectively becomes known as 'Mongrel Boots' from here on in.

1940

William had an interest in machinery. During the tough times of the Great Depression, he purchased equipment and machinery from various liquidation auctions. He later used this machinery to start his first full-scale factory, known as 'Victor Boot Company'. When WWII hit, the factory turned its efforts towards producing high-quality military boots for all the young soldiers honouring their country at war.



1980

1990



As time goes on, William Stanley Cloros was proud to have his two sons Michael and Paul begin their love for boot craftsmanship. They both receive training as pattern cutters and go onto become footwear technicians. Victor again outgrew its premises and relocates to a larger factory in Lidcombe, Sydney before launching a new range of dual density PU work boots known as 'Victor Workbrutes'.



2020

90 years after its inception, Victor Footwear is still manufacturing their boots in Australia. The Cloros family is now five generations deep, with three generations of the family working active roles in the Mongrel Boots business, creating what truly is a great Australian story. Mongrel Boots recently collaborated with the world-leaders in soles, Vibram®, to deliver a new range of heavy-duty boots that are heat, oil & acid resistant.



2008

When most other Australian boot companies were moving their production offshore, Mongrel solidifies their position as an Australian manufacturer with the construction of a new purpose-built manufacturing facility in Auburn, Sydney. As a result, Mongrel was able to keep jobs in Australia and deliver the same quality craftsmanship the company built its reputation on. To keep up with demand, another Desma direct injection moulding machine is installed alongside the current one.

2006

Changing the Aussie work boot scene forever, Mongrel launches the first 'ZipSider' boot onto the market. 14 years on, Mongrel ZipSiders are still category leaders in Australia.




2018



AUSSIE BORN & BRED

Mongrel doubles down on their commitment to Aussie manufacturing, investing big in a new 30 station Desma direct injection moulding machine that's coupled with amir® technology. This was the first of its kind in Australia and remains so to this day.



A pair of tan leather Zipsider boots is shown from a low-angle perspective, standing on a concrete floor. The boots are laced up and feature a prominent toe cap and a thick, treaded sole. The background is a slightly blurred concrete surface with some debris.

ZIPSIDER

---

MONGREL, THE TRUE BLUE  
ORIGIN OF THE ZIPSIDER



### 261060 | Sizes 3-14 (6.5-10.5)

- 200J steel toe cap
- YKK zipper w/ ZipGuard
- AirZone Comfort System®
- Electrical hazard resistant
- Slip, oil & fat resistant TPU/PU ToughSider sole
- OrthoTec Air footbed w/ anatomical arch support
- Temperature regulating lining
- Coats Nylbond stitching
- Padded tongue and collar
- Premium nubuck leather

Certified to AS 2210.3:2019, ISO 20345:2011, MOD, ASTM F2413



### 261050 | Sizes 3-14 (6.5-10.5)

- 200J steel toe cap
- YKK zipper w/ ZipGuard
- AirZone Comfort System®
- Electrical hazard resistant
- Slip, oil & fat resistant TPU/PU ToughSider sole
- OrthoTec Air footbed w/ anatomical arch support
- Temperature regulating lining
- Coats Nylbond stitching
- Padded tongue and collar
- Premium nubuck leather

Certified to AS 2210.3:2019, ISO 20345:2011, MOD, ASTM F2413



### 261020 | Sizes 3-14 (6.5-10.5)

- 200J steel toe cap
- YKK zipper w/ ZipGuard
- AirZone Comfort System®
- Electrical hazard resistant
- Slip, oil & fat resistant TPU/PU ToughSider sole
- OrthoTec Air footbed w/ anatomical arch support
- Temperature regulating lining
- Coats Nylbond stitching
- Padded tongue and collar
- Premium full grain leather

Certified to AS 2210.3:2019, ISO 20345:2011, MOD, ASTM F2413



### 251060 | Sizes 5-14 (6.5-10.5)

- 200J steel toe cap
- YKK zipper w/ ZipGuard
- AirZone Comfort System®
- Electrical hazard resistant
- Slip, oil & fat resistant TPU/PU ToughSider sole
- OrthoTec Air footbed w/ anatomical arch support
- Temperature regulating lining
- Coats Nylbond stitching
- Padded tongue and collar
- Premium nubuck leather

Certified to AS 2210.3:2019, ISO 20345:2011, MOD, ASTM F2413



### 251050 | Sizes 3-14 (6.5-10.5)

- 200J steel toe cap
- YKK zipper w/ ZipGuard
- AirZone Comfort System®
- Electrical hazard resistant
- Slip, oil & fat resistant TPU/PU ToughSider sole
- OrthoTec Air footbed w/ anatomical arch support
- Temperature regulating lining
- Coats Nylbond stitching
- Padded tongue and collar
- Premium nubuck leather

Certified to AS 2210.3:2019, ISO 20345:2011, MOD, ASTM F2413



### 251020 | Sizes 5-14 (6.5-10.5)

- 200J steel toe cap
- YKK zipper w/ ZipGuard
- AirZone Comfort System®
- Electrical hazard resistant
- Slip, oil & fat resistant TPU/PU ToughSider sole
- OrthoTec Air footbed w/ anatomical arch support
- Temperature regulating lining
- Coats Nylbond stitching
- Padded tongue and collar
- Premium full grain leather

Certified to AS 2210.3:2019, ISO 20345:2011, MOD, ASTM F2413

# ZIPSIDER

Since pioneering the first ever 'ZipSider' work boot in 2006, we've changed the way people get in and out of their boots forever. The popularity of our ZipSiders grew rapidly and they quickly became the most popular boots in our range.

If you're looking for comfort, support & convenience, the ZipSider is for you!

HIGH LEG ZIPSIDER BOOT W/ SCUFF CAP



**561060 | Sizes 5-13 (6.5-10.5)**

- 200J steel toe cap
- Heat, oil & acid resistant Vibram® rubber outsole
- Moulded PU scuff cap for longevity
- YKK zipper w/ full length ZipGuard
- Antistatic
- SRC slip resistance
- AirZone Comfort System®
- OrthoTec Poron® footbed w/ anatomical arch support
- Dri-Freeze® lining that dissipates heat
- Nomex® vamp stitching
- Silicone AbrasionGuard
- Padded tongue and collar
- Premium nubuck leather

Certified to AS 2210.3:2019, ISO 20345:2011, MOD, ASTM F2413



**561050 | Sizes 5-13 (6.5-10.5)**

- 200J steel toe cap
- Heat, oil & acid resistant Vibram® rubber outsole
- Moulded PU scuff cap for longevity
- YKK zipper w/ full length ZipGuard
- Antistatic
- SRC slip resistance
- AirZone Comfort System®
- OrthoTec Poron® footbed w/ anatomical arch support
- Dri-Freeze® lining that dissipates heat
- Nomex® vamp stitching
- Silicone AbrasionGuard
- Padded tongue and collar
- Premium nubuck leather

Certified to AS 2210.3:2019, ISO 20345:2011, MOD, ASTM F2413



**561020 | Sizes 5-13 (6.5-10.5)**

- 200J steel toe cap
- Heat, oil & acid resistant Vibram® rubber outsole
- Moulded PU scuff cap for longevity
- YKK zipper w/ full length ZipGuard
- Antistatic
- SRC slip resistance
- AirZone Comfort System®
- OrthoTec Poron® footbed w/ anatomical arch support
- Dri-Freeze® lining that dissipates heat
- Nomex® vamp stitching
- Silicone AbrasionGuard
- Padded tongue and collar
- Premium full grain leather

Certified to AS 2210.3:2019, ISO 20345:2011, MOD, ASTM F2413



**451050 | Sizes 5-14 (6.5-10.5)**

- 200J steel toe cap
- Moulded PU scuff cap for longevity
- YKK zipper w/ ZipGuard
- AirZone Comfort System®
- Electrical hazard resistant
- Slip, oil & fat resistant TPU/PU ToughSider sole
- OrthoTec Air footbed w/ anatomical arch support
- Temperature regulating lining
- Coats Nylbond stitching
- Padded tongue and collar
- Premium nubuck leather

Certified to AS 2210.3:2019, ISO 20345:2011, MOD, ASTM F2413





ZIPSIDER BOOT W/ SCUFF CAP



**461060 | Sizes 5-14 (6.5-10.5)**

- 200J steel toe cap
- Moulded PU scuff cap for longevity
- YKK zipper w/ ZipGuard
- AirZone Comfort System®
- Electrical hazard resistant
- Slip, oil & fat resistant TPU/PU ToughSider sole
- OrthoTec Air footbed w/ anatomical arch support
- Temperature regulating lining
- Coats Nylbond stitching
- Padded tongue and collar
- Premium nubuck leather

Certified to AS 2210.3:2019, ISO 20345:2011, MOD, ASTM F2413



**461050 | Sizes 5-14 (6.5-10.5)**

- 200J steel toe cap
- Moulded PU scuff cap for longevity
- YKK zipper w/ ZipGuard
- AirZone Comfort System®
- Electrical hazard resistant
- Slip, oil & fat resistant TPU/PU ToughSider sole
- OrthoTec Air footbed w/ anatomical arch support
- Temperature regulating lining
- Coats Nylbond stitching
- Padded tongue and collar
- Premium nubuck leather

Certified to AS 2210.3:2019, ISO 20345:2011, MOD, ASTM F2413



**461020 | Sizes 5-14 (6.5-10.5)**

- 200J steel toe cap
- Moulded PU scuff cap for longevity
- YKK zipper w/ ZipGuard
- AirZone Comfort System®
- Electrical hazard resistant
- Slip, oil & fat resistant TPU/PU ToughSider sole
- OrthoTec Air footbed w/ anatomical arch support
- Temperature regulating lining
- Coats Nylbond stitching
- Padded tongue and collar
- Premium full grain leather

Certified to AS 2210.3:2019, ISO 20345:2011, MOD, ASTM F2413



TEMPERATURE  
REGULATING LINING



200J STEEL TOE CAP



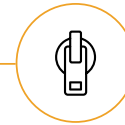
SCUFF CAP



SLIP, OIL & FAT RESISTANT



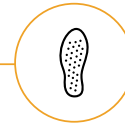
ELECTRICAL HAZARD RESISTANT



YKK ZIPPER  
W/ ZIPGUARD



COATS NYLONBOND  
STITCHING



ORTHOTEC AIR FOOTBED W/  
ANATOMICAL ARCH SUPPORT



AIRZONE  
COMFORT SYSTEM®



TPU/PU TOUGHSIDER SOLE









OIL & ACID  
RESISTANT



ANTISTATIC



VIBRAM® RUBBER  
OUTSOLE (300°C)



SRC SLIP  
RESISTANCE

## VIBRAM® SOLES

Mongrel has raised the bar for rubber-soled work boots in Australia. We worked closely with Vibram® to develop and produce a class-leading rubber outsole. A perfect match of brawn meets performance.

For more than 75 years Vibram® has been delivering the most advanced soles to the market. Vibram® soles are known for use in outdoor sports such as mountaineering, hiking, trail running, motorcycling as well as for casual and industrial applications. The secret of Vibram® performance is the optimal combination of hyper-functional design and exclusive rubber compounds. The Vibram® yellow octagon represents the gold standard of quality and performance throughout the footwear industry and can now be found on a select range of heavy-duty Mongrels.

The first of its kind in the Australian work boot market, our Vibram® sole has superior resistance to cracking, splitting & abrasion and is heat, oil & acid resistant. With SRC slip resistance, grip and traction are some of its strong points. We challenge you to put it to the test!

**GRIP** is improved by

- Balanced combination of design and compound
- Lug design that conforms to the intended surface
- Large contact surfaces
- High performance rubber compound

**TRACTION** is improved by

- Sharp edge and high profile lug design
- Self cleaning channels
- High profile lug design
- High performance rubber compound

**STABILITY** is improved by

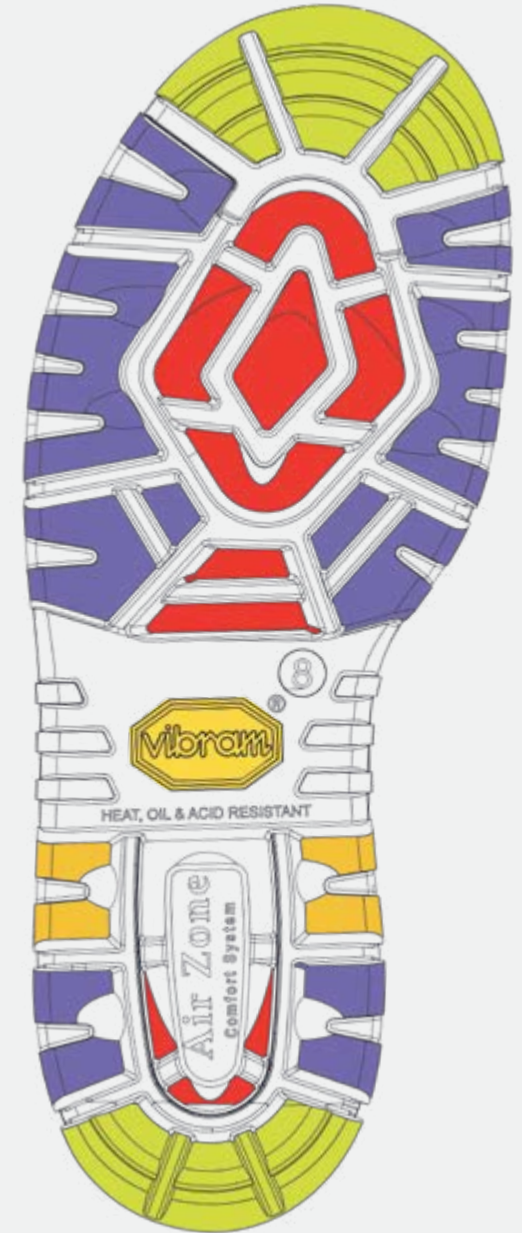
- Large contact lug design
- Rigid/semi rigid frames
- Larger lugs on the perimeter
- High performance rubber compound

**BRAKING** is improved by

- High profile with undercut heel
- Sharp edge lug design
- Slanted heel for natural rolling on touchdown
- High performance rubber compound

**SELF-CLEANING** is improved by

- Lug positioning (open design)
- Large mud/snow release channels
- Water draining micro incision (sipping)
- Low profile lug design (shallow lugs)



A close-up photograph of a worker's foot in a tan safety boot with a straight lacing system. The boot is positioned on a concrete surface. In the background, a person is using a power tool, likely a grinder, which is creating a shower of bright orange sparks. The worker is wearing blue socks with a yellow and black pattern. The overall scene is a construction or industrial setting.

LACE UP

NOT DESIGNED FOR THE  
STRAIT-LACED WORKER



### 260050 | Sizes 3-14 (6.5-10.5)

- 200J steel toe cap
- AirZone Comfort System®
- Electrical hazard resistant
- Slip, oil & fat resistant TPU/PU ToughSider sole
- Temperature regulating lining
- OrthoTec Air footbed w/ anatomical arch support
- Coats Nylbond stitching
- Padded tongue and collar
- Premium nubuck leather

Certified to AS 2210.3:2019, ISO 20345:2011, MOD, ASTM F2413



### 260030 | Sizes 5-14 (6.5-10.5)

- 200J steel toe cap
- AirZone Comfort System®
- Electrical hazard resistant
- Slip, oil & fat resistant TPU/PU ToughSider sole
- Temperature regulating lining
- OrthoTec Air footbed w/ anatomical arch support
- Coats Nylbond stitching
- Padded tongue and collar
- Premium full grain leather

Certified to AS 2210.3:2019, ISO 20345:2011, MOD, ASTM F2413



### 260020 | Sizes 3-14 (6.5-10.5)

- 200J steel toe cap
- AirZone Comfort System®
- Electrical hazard resistant
- Slip, oil & fat resistant TPU/PU ToughSider sole
- Temperature regulating lining
- OrthoTec Air footbed w/ anatomical arch support
- Coats Nylbond stitching
- Padded tongue and collar
- Premium full grain leather

Certified to AS 2210.3:2019, ISO 20345:2011, MOD, ASTM F2413



### 550050 | Sizes 5-13 (6.5-10.5)

- 200J steel toe cap
- Heat, oil & acid resistant Vibram® rubber outsole
- Moulded PU scuff cap for longevity
- Antistatic
- SRC slip resistance
- AirZone Comfort System®
- OrthoTec Poron® footbed w/ anatomical arch support
- Dri-Freeze® lining that dissipates heat
- Nomex® vamp stitching
- Silicone AbrasionGuard
- Padded tongue and collar
- Premium nubuck leather

Certified to AS 2210.3:2019, ISO 20345:2011, MOD, ASTM F2413



### 550020 | Sizes 5-13 (6.5-10.5)

- 200J steel toe cap
- Heat, oil & acid resistant Vibram® rubber outsole
- Moulded PU scuff cap for longevity
- Antistatic
- SRC slip resistance
- AirZone Comfort System®
- OrthoTec Poron® footbed w/ anatomical arch support
- Dri-Freeze® lining that dissipates heat
- Nomex® vamp stitching
- Silicone AbrasionGuard
- Padded tongue and collar
- Premium full grain leather

Certified to AS 2210.3:2019, ISO 20345:2011, MOD, ASTM F2413



A man wearing a tan cowboy hat with sunglasses perched on top, a blue and white plaid long-sleeved shirt, and blue jeans stands in a field of dark brown soil. He is looking off to the side with his hands on his hips. In the background, several longhorn cattle are visible, including a white one and a brown one with long horns. The scene is set in a rural landscape with green hills and a blue sky with scattered clouds. A wooden fence is partially visible on the right side.

ELASTIC SIDED

---

THE QUINTESSENTIAL  
AUSSIE BOOT





**240060 | Sizes 5-14 (6.5-10.5)**

- 200J steel toe cap
- AirZone Comfort System®
- Electrical hazard resistant
- Slip, oil & fat resistant TPU/PU ToughSider sole
- OrthoTec Air footbed w/ anatomical arch support
- Chelsea cut upper
- Coats Nylbond stitching
- Premium nubuck leather

Certified to AS 2210.3:2019, ISO 20345:2011, MOD, ASTM F2413



**240030 | Sizes 3-14 (6.5-10.5)**

- 200J steel toe cap
- AirZone Comfort System®
- Electrical hazard resistant
- Slip, oil & fat resistant TPU/PU ToughSider sole
- OrthoTec Air footbed w/ anatomical arch support
- Chelsea cut upper
- Coats Nylbond stitching
- Premium full grain leather

Certified to AS 2210.3:2019, ISO 20345:2011, MOD, ASTM F2413



**240020 | Sizes 5-14 (6.5-10.5)**

- 200J steel toe cap
- AirZone Comfort System®
- Electrical hazard resistant
- Slip, oil & fat resistant TPU/PU ToughSider sole
- OrthoTec Air footbed w/ anatomical arch support
- Chelsea cut upper
- Coats Nylbond stitching
- Premium full grain leather

Certified to AS 2210.3:2019, ISO 20345:2011, MOD, ASTM F2413



**545030 | Sizes 5-13 (6.5-10.5)**

- 200J steel toe cap
- Heat, oil & acid resistant Vibram® rubber outsole
- Moulded PU scuff cap for longevity
- SRC slip resistance
- AirZone Comfort System®
- Temperature regulating lining
- Antistatic
- OrthoTec Poron® footbed w/ anatomical arch support
- One piece blocked vamp
- Coats Nylbond stitching
- Premium full grain leather

Certified to AS 2210.3:2019, ISO 20345:2011, MOD, ASTM F2413



**440050 | Sizes 5-14 (6.5-10.5)**

- 200J steel toe cap
- Moulded PU scuff cap for longevity
- AirZone Comfort System®
- Electrical hazard resistant
- Slip, oil & fat resistant TPU/PU ToughSider sole
- Temperature regulating lining
- OrthoTec Air footbed w/ anatomical arch support
- Chelsea cut upper
- Coats Nylbond stitching
- Premium nubuck leather

Certified to AS 2210.3:2019, ISO 20345:2011, MOD, ASTM F2413



**240090 | Sizes 5-14 (6.5-10.5)**

- 200J steel toe cap
- AirZone Comfort System®
- Electrical hazard resistant
- Slip, oil & fat resistant TPU/PU ToughSider sole
- OrthoTec Lite footbed
- V-cut upper
- Coats Nylbond stitching
- Full grain leather

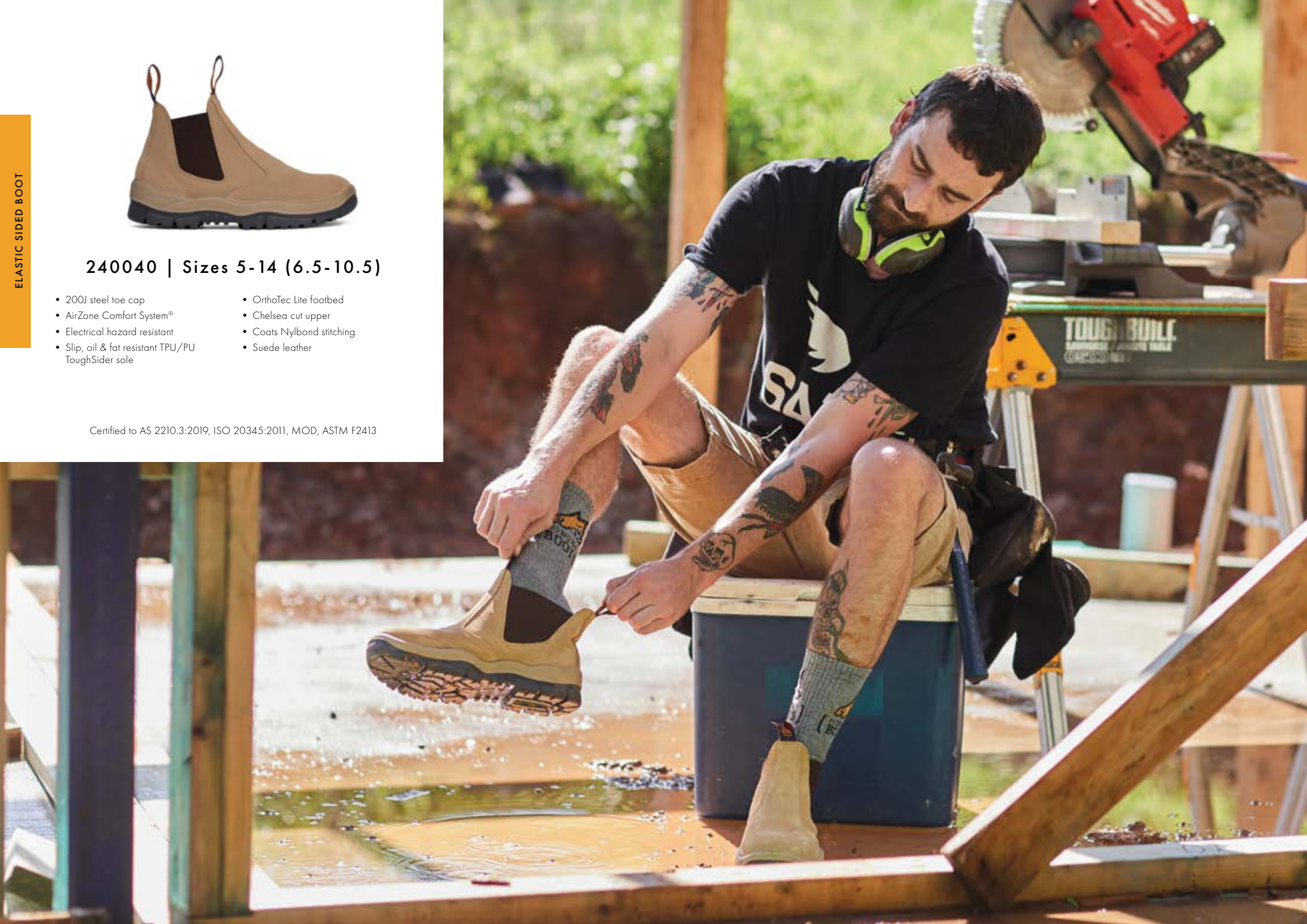
Certified to AS 2210.3:2019, ISO 20345:2011, MOD, ASTM F2413



**240040 | Sizes 5-14 (6.5-10.5)**

- 200J steel toe cap
- AirZone Comfort System®
- Electrical hazard resistant
- Slip, oil & fat resistant TPU/PU ToughSider sole
- OrthoTec Lite footbed
- Chelsea cut upper
- Coats Nylbond stitching
- Suede leather

Certified to AS 2210.3:2019, ISO 20345:2011, MOD, ASTM F2413





## ROLLER SOLE TECHNOLOGY®

## ROLLER SOLE TECHNOLOGY®

Give me a Roller Sole any day! This computer aided design feature was originally designed for high-tech sports shoes and was formed with the roll motion in mind. With a specially shaped sole, this technology creates a roller action when walking. This roller action increases comfort and safety, by making the action of walking far smoother therefore lessening fatigue. Like our AirZone Comfort System®, it's featured on both our TPU and Vibram® rubber soles.



## AIRZONE COMFORT SYSTEM®

The AirZone Comfort System® works by trapping air in the heel cavity, creating a cushion-enhanced comfort for the wearer. The superior cushioning absorbs sudden blows and the degenerative effects of constant heel strike. Like the other design features you'll find in the sole of your Mongrels, the AirZone Comfort System® is designed to give you an extra spring in your step by enhancing comfort and reducing fatigue.



# THE AUTHENTIC AUSTRALIAN WORK BOOT

AUSTRALIAN MADE & OWNED

Some boot brands like to promote Australian ownership and an Australian image, but fully import their boots. We went the other way. When others were moving production offshore, we made the call to keep jobs in Australia and keep Mongrels Australian made.

We pride ourselves on being one of the only Australian boot companies that manufacture boots locally. If you're not wearing Mongrels now, check your boots and see for yourself! Mongrel Boots are made in Sydney using state-of-the-art equipment. It allows us to maintain excellent stock levels and ensure world-class technology and innovation for both safety and comfort.





# **TOUGHSIDER**

## **TOUGHSIDER DESIGN**

---

# **BUILT FOR AUSSIE TERRAIN**

The ToughSider sole gets going when the going gets rough! The ToughSider sole is a hallmark of our sole design and is comprised of a deeper and wider tread pattern, similar to that of a 4WD mud tyre. The design enhances your performance giving you more grip and stability in rugged terrain. With built-in arch support, our ToughSider sole reduces fatigue and guarantees you a smoother ride.





SHOE

---

WE'RE NOT JUST ABOUT BOOTS



HIKER SHOE



**390080 | Sizes 3-13 (6.5-10.5)**

- 200J steel toe cap
- AirZone Comfort System®
- Electrical hazard resistant
- Slip, oil & fat resistant TPU/PU ToughSider sole
- Temperature regulating lining
- OrthoTec Air footbed w/ anatomical arch support
- Speed lacing D-Rings
- Coats Nylbond stitching
- Padded tongue and collar
- Premium nubuck leather

Certified to AS 2210.3:2019, ISO 20345:2011, MOD, ASTM F2413

DERBY SHOE



**210025 | Sizes 3-14 (6.5-10.5)**

- 200J steel toe cap
- AirZone Comfort System®
- Electrical hazard resistant
- Slip, oil & fat resistant TPU/PU ToughSider sole
- Temperature regulating lining
- OrthoTec Air footbed w/ anatomical arch support
- Coats Nylbond stitching
- Padded tongue and collar
- Premium full grain leather

Certified to AS 2210.3:2019, ISO 20345:2011, MOD, ASTM F2413

SLIP-ON SHOE



**315060 | Sizes 3-13 (6.5-10.5)**

- 200J steel toe cap
- AirZone Comfort System®
- Electrical hazard resistant
- Slip, oil & fat resistant TPU/PU ToughSider sole
- Temperature regulating lining
- OrthoTec Air footbed w/ anatomical arch support
- Elastic gusset for secure fit
- Coats Nylbond stitching
- Padded tongue and collar
- Premium nubuck leather

Certified to AS 2210.3:2019, ISO 20345:2011, MOD, ASTM F2413



**315085 | Sizes 3-13 (6.5-10.5)**

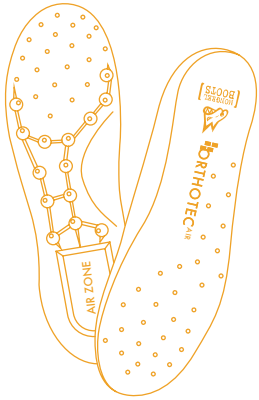
- 200J steel toe cap
- AirZone Comfort System®
- Electrical hazard resistant
- Slip, oil & fat resistant TPU/PU ToughSider sole
- Temperature regulating lining
- OrthoTec Air footbed w/ anatomical arch support
- Elastic gusset for secure fit
- Coats Nylbond stitching
- Padded tongue and collar
- Premium full grain leather

Certified to AS 2210.3:2019, ISO 20345:2011, MOD, ASTM F2413



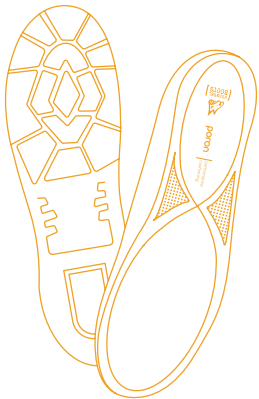


# THE INNER SOLE OF A MONGREL



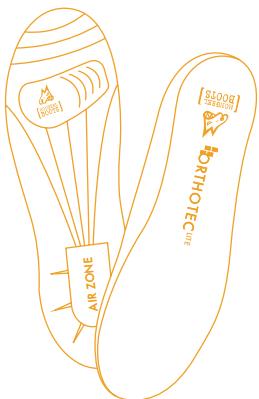
## ORTHOTEC AIR

The technology found in the OrthoTec Air footbed has been designed specifically for our boots. The interconnected air holes assist the closed-cell polyurethane foam structure to circulate air throughout the boot, creating constant air flow and increased levels of comfort. OrthoTec Air features anatomically designed arch support and an AirZone Comfort System® inside its soft yet stable polyurethane structure. This all creates a shock absorber like effect to absorb sudden blows and combat the degenerative effects of heel strike, which in turn enhances comfort and reduces fatigue. This footbed is our most popular and can be found in the majority of our boots.



## ORTHOTEC PORON®

Designed specifically for our new range of Vibram® soled boots, the OrthoTec Poron® footbed has been modelled off our best-selling and extremely comfortable OrthoTec Air footbed. To further enhance the comfort and shock absorbing characteristics of this footbed, we've inserted Poron® Performance Cushioning into the heel cavity. Poron® Performance Cushioning is a versatile shock absorbing material that has been engineered to increase comfort and reduce fatigue caused by hard work. This antistatic footbed can be found in any Mongrel that features a Vibram® rubber outsole.



## ORTHOTEC LITE

OrthoTec Lite has an open foam polyurethane design, which maintains its shape and won't flatten out significantly over time with heavy-duty work. The air-blown PU footbed has recently been reengineered with AirZone Comfort System® circulation features, assisting with moisture control and delivering a simple footbed that is comfortable and hard wearing. OrthoTec Lite features less arch support than our OrthoTec Air footbed, making it better suited to people with flat feet. This footbed can be found in our entry-level styles.



LADIES RANGE

---

FOR A FIT THAT'S JUST RIGHT



### 261060 | Sizes 3-14 (6.5-10.5)

- 200J steel toe cap
- YKK zipper w/ ZipGuard
- AirZone Comfort System®
- Electrical hazard resistant
- Slip, oil & fat resistant TPU/PU ToughSider sole
- OrthoTec Air footbed w/ anatomical arch support
- Temperature regulating lining
- Coats Nylbond stitching
- Padded tongue and collar
- Premium nubuck leather

Certified to AS 2210.3:2019, ISO 20345:2011, MOD, ASTM F2413



### 261050 | Sizes 3-14 (6.5-10.5)

- 200J steel toe cap
- YKK zipper w/ ZipGuard
- AirZone Comfort System®
- Electrical hazard resistant
- Slip, oil & fat resistant TPU/PU ToughSider sole
- OrthoTec Air footbed w/ anatomical arch support
- Temperature regulating lining
- Coats Nylbond stitching
- Padded tongue and collar
- Premium nubuck leather

Certified to AS 2210.3:2019, ISO 20345:2011, MOD, ASTM F2413



### 261020 | Sizes 3-14 (6.5-10.5)

- 200J steel toe cap
- YKK zipper w/ ZipGuard
- AirZone Comfort System®
- Electrical hazard resistant
- Slip, oil & fat resistant TPU/PU ToughSider sole
- OrthoTec Air footbed w/ anatomical arch support
- Temperature regulating lining
- Coats Nylbond stitching
- Padded tongue and collar
- Premium full grain leather

Certified to AS 2210.3:2019, ISO 20345:2011, MOD, ASTM F2413



### 260050 | Sizes 3-14 (6.5-10.5)

- 200J steel toe cap
- AirZone Comfort System®
- Electrical hazard resistant
- Slip, oil & fat resistant TPU/PU ToughSider sole
- Temperature regulating lining
- OrthoTec Air footbed w/ anatomical arch support
- Coats Nylbond stitching
- Padded tongue and collar
- Premium nubuck leather

Certified to AS 2210.3:2019, ISO 20345:2011, MOD, ASTM F2413



### 260020 | Sizes 3-14 (6.5-10.5)

- 200J steel toe cap
- AirZone Comfort System®
- Electrical hazard resistant
- Slip, oil & fat resistant TPU/PU ToughSider sole
- Temperature regulating lining
- OrthoTec Air footbed w/ anatomical arch support
- Coats Nylbond stitching
- Padded tongue and collar
- Premium full grain leather

Certified to AS 2210.3:2019, ISO 20345:2011, MOD, ASTM F2413



### 251050 | Sizes 3-14 (6.5-10.5)

- 200J steel toe cap
- YKK zipper w/ ZipGuard
- AirZone Comfort System®
- Electrical hazard resistant
- Slip, oil & fat resistant TPU/PU ToughSider sole
- OrthoTec Air footbed w/ anatomical arch support
- Temperature regulating lining
- Coats Nylbond stitching
- Padded tongue and collar
- Premium nubuck leather

Certified to AS 2210.3:2019, ISO 20345:2011, MOD, ASTM F2413



### 390080 | Sizes 3-13 (6.5-10.5)

- 200J steel toe cap
- AirZone Comfort System®
- Electrical hazard resistant
- Slip, oil & fat resistant TPU/PU ToughSider sole
- Temperature regulating lining
- OrthoTec Air footbed w/ anatomical arch support
- Speed lacing D-Rings
- Coats Nylbond stitching
- Padded tongue and collar
- Premium nubuck leather

Certified to AS 2210.3:2019, ISO 20345:2011, MOD, ASTM F2413



### 210025 | Sizes 3-14 (6.5-10.5)

- 200J steel toe cap
- AirZone Comfort System®
- Electrical hazard resistant
- Slip, oil & fat resistant TPU/PU ToughSider sole
- Temperature regulating lining
- OrthoTec Air footbed w/ anatomical arch support
- Coats Nylbond stitching
- Padded tongue and collar
- Premium full grain leather

Certified to AS 2210.3:2019, ISO 20345:2011, MOD, ASTM F2413



### 240030 | Sizes 3-14 (6.5-10.5)

- 200J steel toe cap
- AirZone Comfort System®
- Electrical hazard resistant
- Slip, oil & fat resistant TPU/PU ToughSider sole
- OrthoTec Air footbed w/ anatomical arch support
- Chelsea cut upper
- Coats Nylbond stitching
- Premium full grain leather

Certified to AS 2210.3:2019, ISO 20345:2011, MOD, ASTM F2413



### 315060 | Sizes 3-13 (6.5-10.5)

- 200J steel toe cap
- AirZone Comfort System®
- Electrical hazard resistant
- Slip, oil & fat resistant TPU/PU ToughSider sole
- Temperature regulating lining
- OrthoTec Air footbed w/ anatomical arch support
- Elastic gusset for secure fit
- Coats Nylbond stitching
- Padded tongue and collar
- Premium nubuck leather

Certified to AS 2210.3:2019, ISO 20345:2011, MOD, ASTM F2413



### 315085 | Sizes 3-13 (6.5-10.5)

- 200J steel toe cap
- AirZone Comfort System®
- Electrical hazard resistant
- Slip, oil & fat resistant TPU/PU ToughSider sole
- Temperature regulating lining
- OrthoTec Air footbed w/ anatomical arch support
- Elastic gusset for secure fit
- Coats Nylbond stitching
- Padded tongue and collar
- Premium full grain leather

Certified to AS 2210.3:2019, ISO 20345:2011, MOD, ASTM F2413





## DESIGNED FOR THE LADY

---

An all-day wear boot needs to have the right fit. Our safety & non-safety boots in Mongrel sizes 3-6.5 are designed specifically for the female foot. This design is a narrower width fitting with refined female specific arch support.

To find your size in a Mongrel, simply size 2 down from your ladies AUS/UK size.

To dress up your new or loyal Mongrels, grab some of our pink laces!

A man wearing a light-colored cowboy hat, a blue and white plaid shirt, and blue jeans is sitting on a large pile of hay. He is holding a black dog, possibly a Rottweiler, which is sitting upright and looking towards the man. The man is smiling and looking at the dog. The background shows a metal cage structure, likely for a dog, and some trees in the distance. The overall scene is outdoors and appears to be a farm or a ranch.

NON-SAFETY

A MONGREL YOU CAN RELY ON  
FOR ALL OCCASIONS





**961060 | Sizes 3-14 (6.5-10.5)**

- Non-safety toe cap
- YKK zipper w/ ZipGuard
- AirZone Comfort System®
- Slip, oil & fat resistant TPU/PU ToughSider sole
- Temperature regulating lining
- OrthoTec Air footbed w/ anatomical arch support
- Coats Nylbond stitching
- Padded tongue and collar
- Premium nubuck leather



**961050 | Sizes 3-14 (6.5-10.5)**

- Non-safety toe cap
- YKK zipper w/ ZipGuard
- AirZone Comfort System®
- Slip, oil & fat resistant TPU/PU ToughSider sole
- Temperature regulating lining
- OrthoTec Air footbed w/ anatomical arch support
- Coats Nylbond stitching
- Padded tongue and collar
- Premium nubuck leather



**961020 | Sizes 3-14 (6.5-10.5)**

- Non-safety toe cap
- YKK zipper w/ ZipGuard
- AirZone Comfort System®
- Slip, oil & fat resistant TPU/PU ToughSider sole
- Temperature regulating lining
- OrthoTec Air footbed w/ anatomical arch support
- Coats Nylbond stitching
- Padded tongue and collar
- Premium full grain leather



**916030 | Sizes 3-14 (6.5-10.5)**

- Non-safety toe cap
- AirZone Comfort System®
- Slip, oil & fat resistant TPU/PU ToughSider sole
- OrthoTec Lite footbed
- V-cut upper
- Coats Nylbond stitching
- Full grain leather



**916040 | Sizes 5-14 (6.5-10.5)**

- Non-safety toe cap
- AirZone Comfort System®
- Slip, oil & fat resistant TPU/PU ToughSider sole
- OrthoTec Lite footbed
- Chelsea cut upper
- Coats Nylbond stitching
- Suede leather



**916020 | Sizes 3-14 (6.5-10.5)**

- Non-safety toe cap
- AirZone Comfort System®
- Slip, oil & fat resistant TPU/PU ToughSider sole
- OrthoTec Lite footbed
- V-cut upper
- Coats Nylbond stitching
- Full grain leather



**940030 | Sizes 3-14 (6.5-10.5)**

- Non-safety toe cap
- AirZone Comfort System®
- Slip, oil & fat resistant TPU/PU ToughSider sole
- OrthoTec Air footbed w/ anatomical arch support
- Chelsea cut upper
- Coats Nylbond stitching
- Premium full grain leather



**951050 | Sizes 5-14 (6.5-10.5)**

- Non-safety toe cap
- YKK zipper w/ ZipGuard
- AirZone Comfort System®
- Slip, oil & fat resistant TPU/PU ToughSider sole
- Temperature regulating lining
- OrthoTec Air footbed w/ anatomical arch support
- Coats Nylbond stitching
- Padded tongue and collar
- Premium nubuck leather



**951020 | Sizes 3-14 (6.5-10.5)**

- Non-safety toe cap
- YKK zipper w/ ZipGuard
- AirZone Comfort System®
- Slip, oil & fat resistant TPU/PU ToughSider sole
- Temperature regulating lining
- OrthoTec Air footbed w/ anatomical arch support
- Coats Nylbond stitching
- Padded tongue and collar
- Premium full grain leather



**917030 | Sizes 3-14 (6.5-10.5)**

- Non-safety toe cap
- AirZone Comfort System®
- Slip, oil & fat resistant TPU/PU ToughSider sole
- Temperature regulating lining
- OrthoTec Air footbed w/ anatomical arch support
- Coats Nylbond stitching
- Padded tongue and collar
- Premium full grain leather



**910025 | Sizes 3-14 (6.5-10.5)**

- Non-safety toe cap
- AirZone Comfort System®
- Slip, oil & fat resistant TPU/PU ToughSider sole
- Temperature regulating lining
- OrthoTec Air footbed w/ anatomical arch support
- Coats Nylbond stitching
- Padded tongue and collar
- Premium full grain leather



**915025 | Sizes 3-14 (6.5-10.5)**

- Non-safety toe cap
- AirZone Comfort System®
- Slip, oil & fat resistant TPU/PU ToughSider sole
- Temperature regulating lining
- OrthoTec Air footbed w/ anatomical arch support
- Elastic gusset for secure fit
- Coats Nylbond stitching
- Padded tongue and collar
- Premium full grain leather



**805070 | Sizes 3-13 (6.5-10.5)**

- One piece blocked vamp
- Oil & fat resistant TPU/PU sole
- OrthoTec Lite footbed
- Rigid instep shank for horse riding
- Leather lining
- Premium full grain leather



**805025 | Sizes 3-13 (6.5-10.5)**

- One piece blocked vamp
- Oil & fat resistant TPU/PU sole
- OrthoTec Lite footbed
- Rigid instep shank for horse riding
- Leather lining
- Premium full grain leather



**816030 | Sizes 4-13 (6.5-10.5)**

- V-cut upper
- Oil & fat resistant TPU/PU sole
- OrthoTec Lite footbed
- Rigid instep shank for horse riding
- Full grain leather





## ACCESSORIES





## ORTHOTEC AIR FOOTBED

A full-length polyurethane footbed that provides superior shock absorption, anatomical arch support, ventilation and antibacterial properties for your feet. Our AirZone Comfort System® is also incorporated for maximum comfort.



## COTTON SOCKS

- Pack of 5 pair
- 2 x light grey, 2 x charcoal, 1 x black
- 80% cotton, 15% nylon, 5% elastane
- Fits sizes 5-11



## BAMBOO SOCKS

- Pack of 3 pair (black)
- Antibacterial
- Sustainable & biodegradable
- Soft & comfortable
- 85% bamboo, 10% polyester, 5% elastane



## SUEDE & NUBUCK PROTECTOR

- Formulated to protect suede & nubuck leathers from moisture, dehydration and cracking
  - Repels water & oil
  - Fast-drying formula
- For suede & nubuck only
- 200ml pump bottle



## LEATHER WAX

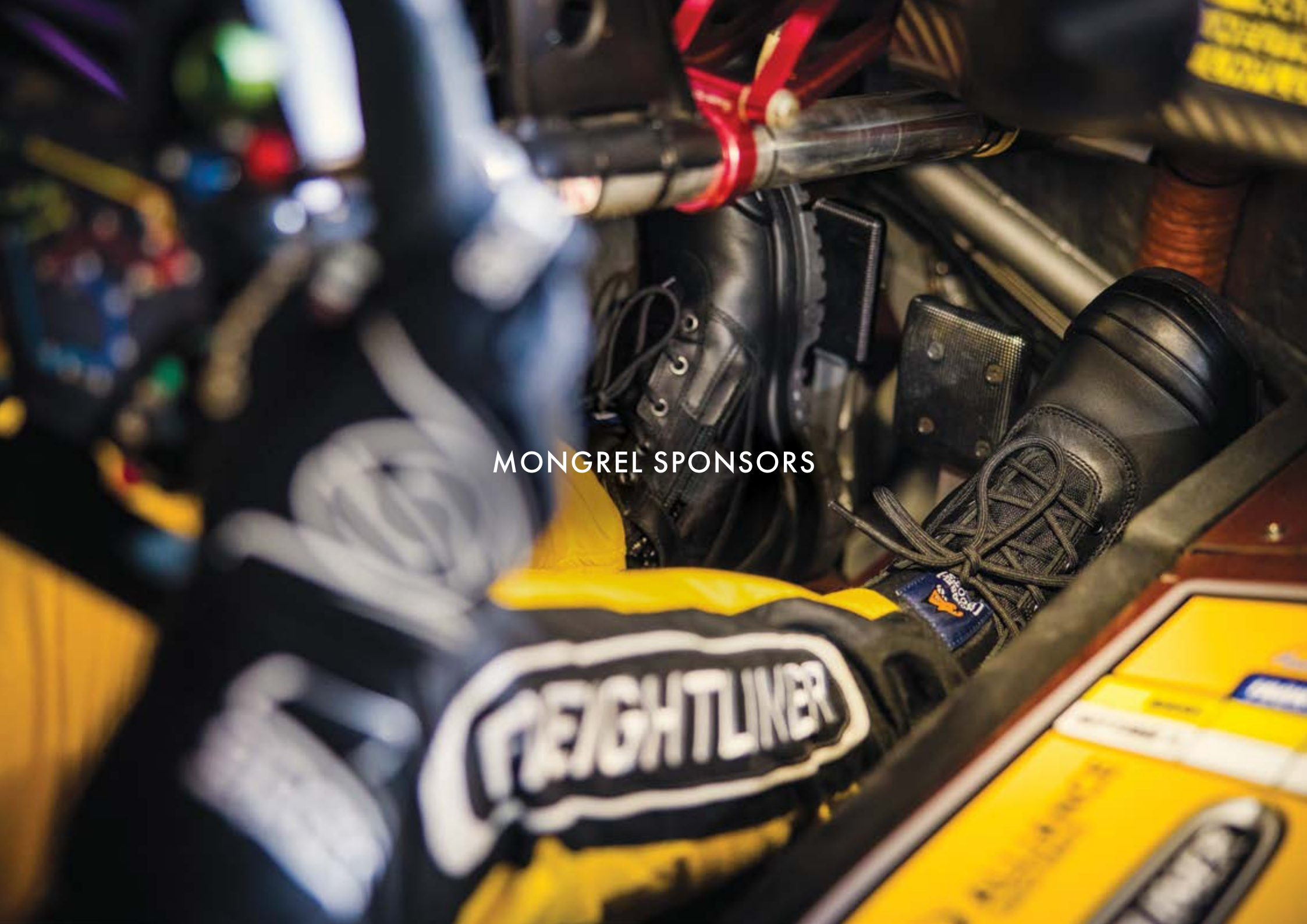
- Formulated to protect full grain leather from moisture, dehydration and cracking
  - Repels water & preserves leather
    - Neutral colour
- Blend of beeswax, carnauba wax & neatsfoot oil
  - Not suitable for suede or nubuck
    - 80g tin



## BOOT LACES

- Available in 120cm, 140cm & 150cm
  - Wheat, Black, Stone & Pink\*

\*Only Available in 120cm & 140cm



MONGREL SPONSORS



## PAT CALLINAN'S 4X4 ADVENTURES

Mongrel Boots can be seen on Australia's premier 4WD television show with 'Mr 4x4' Pat Callinan and his crew wearing Mongrel Boots as they explore Australia.

## #8 ANDRE HEIMGARTNER - BRAD JONES RACING

Mongrel Boots is a key sponsor and the official boot supplier of Brad Jones Racing. Piloted by Andre Heimgartner, the #8 Holden Commodore competes Australia-wide in the Supercars Championship.



## #1 WAYNE MAXWELL - MCMARTIN RACING

Mongrel Boots is a proud sponsor and the official boot supplier of McMartin Racing. Competing in the Australian Superbike Championship with three-time ASBK champion Wayne Maxwell.



---

AUSSIE BORN & BRED

---

Mongrel Boots is a registered trademark of  
Victor Footwear Pty Ltd.

Victor Footwear Pty Ltd, 15 George Young St,  
Auburn NSW 2144 Australia | ACN 000 370 178  
P 02 8667 2555 | F 02 8667 2500 | [sales@mongrelboots.com.au](mailto:sales@mongrelboots.com.au)

[f](#) [@](#) /@mongrelboots | [mongrelboots.com.au](http://mongrelboots.com.au)